

機械規格 Specifications:

型號	MODEL	UNIT	JHV-1800	JHV-2000
行程 TRAVEL 線軌 Linear guideways (X,Y)+硬軌 Box ways (Z)				
X軸行程	X axis travel	mm	1800	2000
Y軸行程	Y axis travel	mm	900	
Z軸行程	Z axis travel	mm	750 / 900, 1000 (opt.)	
主軸鼻端至工作台面	Spindle nose to table surface	mm	150-900	
主軸中心至立柱表面	Spindle center to column surface	mm	950	
工作台 TABLE				
工作台尺寸	Table area	mm	1850x900	2050x900
最大負荷	Max. load of table	kgs	2500	3000
T型槽	T-slot	mm	6 x 18	
主軸 SPINDLE				
主軸轉速	Spindle speed	rpm	6000 (Belt)	
主軸錐度	Spindle taper		BT-50	
自動換刀系統 AUTOMATIC TOOL CHANGER				
刀庫型式	Magazine type		Arm Type	
刀庫容量	Tool magazine capacity	pcs	24T	32T(opt.)
最大刀具直徑	Max. tool diameter	mm	110-220	125-225
最大刀具長度	Max. tool length	mm	240	320
最大刀具重量	Max. tool weight	kgs	15	15
馬達 MOTOR				
主軸馬達	Spindle motor	Kw	11/15	15/18.5
X/Y/Z軸馬達	X/Y/Z axis motor	Kw	4 / 4 / 7	
進給速率 FEED RATE				
快速進給 (X/Y/Z)	Rapid traverse (X, Y, Z)	M/min	24 / 24 / 15	
切削進給	Cutting feed rate	mm/min	1-7000	
滾珠螺桿 BALL SCREW				
X/Y/Z軸	Diameter of X,Y,Z axis	mm	50	
導程	Pitch of X, Y, Z axis	mm	10	
線軌 GUIDEWAYS				
線軌寬度 (X,Y)	Width of linear guideways (X,Y)	mm	45 (8 blocks for each axis)	
硬軌寬度 (Z)	Width of box ways (Z)	mm	140 (55 thickness)	
其它 OTHERS				
佔地面積(L x W x H)	Floor space (L x W x H)	mm	5100 x 3500 x 3650	
機械重量	Machine weight	kgs	17500	18500

尺寸規格若有變更，恕不另行通知。
Design and specifications are subject to change without prior notice.



通過ISO 9001認證

Sunmill
your best partner

晶禧科技股份有限公司
JEENXI TECHNOLOGY CO., LTD.

Agent:

YAMARIS MACHINERY PTE LTD

No. 15 Pioneer Sector 3 Singapore 628348
Tel: (65) 6862 9768 Fax: (65) 6862 8917
Email: yamaris@singnet.com.sg
Website: www.yamaris.com.sg

2009-01-1000

標準配備

- 全罩式鍍金護罩
- 主軸轉速6000rpm (BT50)
- 刀臂式刀庫24把刀
- 主軸油冷機
- 熱交換器
- 後沖水裝置
- 自動潤滑系統
- 三軸伸縮護蓋
- 強力冷卻泵浦裝置
- 三螺旋排屑裝置
- 雙日光燈照明設備
- 三色警示燈
- 工具箱及工具組

Standard Accessories:

- Full enclosed splash guard
- Spindle speed 6000rpm (BT50)
- Arm type ATC 24-tools
- Spindle oil coolant device
- Rigid tapping
- Auto lube system
- Coolant flushing device
- Heat exchanger
- Telescopic cover for 3 axes
- Powerful coolant system
- Triple chip remover - screw type
- Dual fluorescent light
- Warning light
- Tool box & tools

選購配備

- 刀臂式刀庫32把刀
- 皮帶式主軸 8000rpm, BT50
- 皮帶式主軸 8000 / 10000rpm, BT40
- 齒輪箱頭部 6000rpm, BT50
- Z軸行程 900mm / 1000mm
- 滾柱線軌 (X, Y軸)
- 主軸中心出水
- 主軸環狀噴水
- 履帶式鐵屑輸送機
- 第四軸旋轉工作台
- 變壓器
- CE Mark

Optional Accessories:

- Chain type ATC 32 tools
- Spindle speed 8000rpm, BT50
- Spindle speed 8000/10000rpm, BT40
- Gear box headstock, 6000rpm, BT50
- Z axis extend to 900mm / 1000mm
- Roller type linear guideways in X, Y
- Coolant through spindle
- Spindle splash ring
- Chain type chip conveyer
- CNC Rotary table
- Transformer
- CE Mark

Sunmill
your best partner

RELIABLE

RIGIDTY



晶禧科技股份有限公司

JHV-1800 JHV-2000



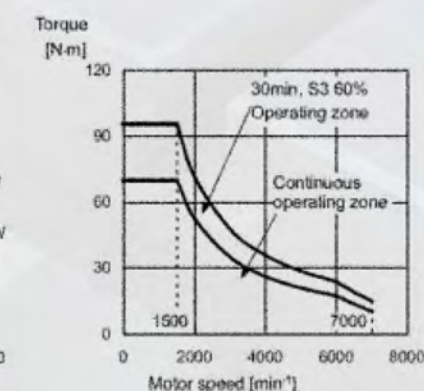
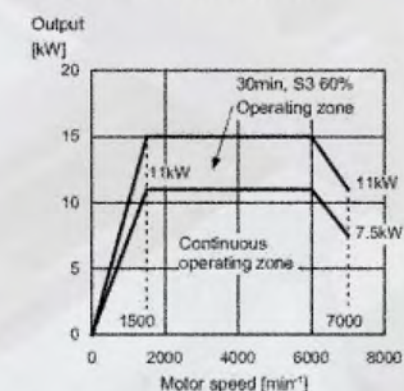
晶禧科技
您信賴的好夥伴

JHV-2000

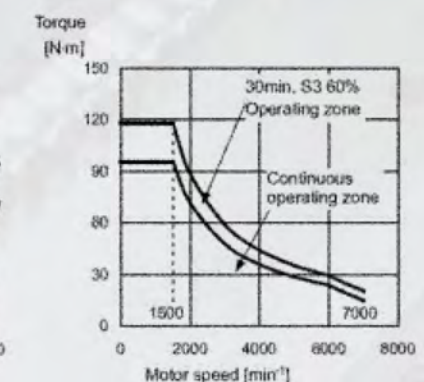
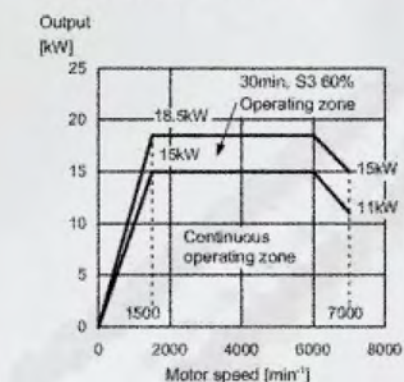
Great Machining Performance

主軸扭力圖 / Spindle Power & Torque

• JHV-1800: $\alpha 12/7000i$



• JHV-2000: $\alpha 15/7000i$



頭部 / 主軸型式 SPINDLE TYPE

- 標準主軸# 50, 6000rpm 皮帶頭
Standard type: Spindle #50, 6000rpm Belt Type
- 其他可選購之主軸型式 (Optional as below)
 - # 50, 8000rpm Belt Type 皮帶式主軸
 - # 40, 8000 / 10000 / 12000rpm Belt Type 皮帶式主軸
 - # 50, 10000rpm Direct Drive Spindle 直結式主軸 (如右圖)
 - # 40, 10000 / 12000 rpm Direct Drive Spindle 直結式主軸
 - # 50, 6000rpm Gear Box 齒輪頭

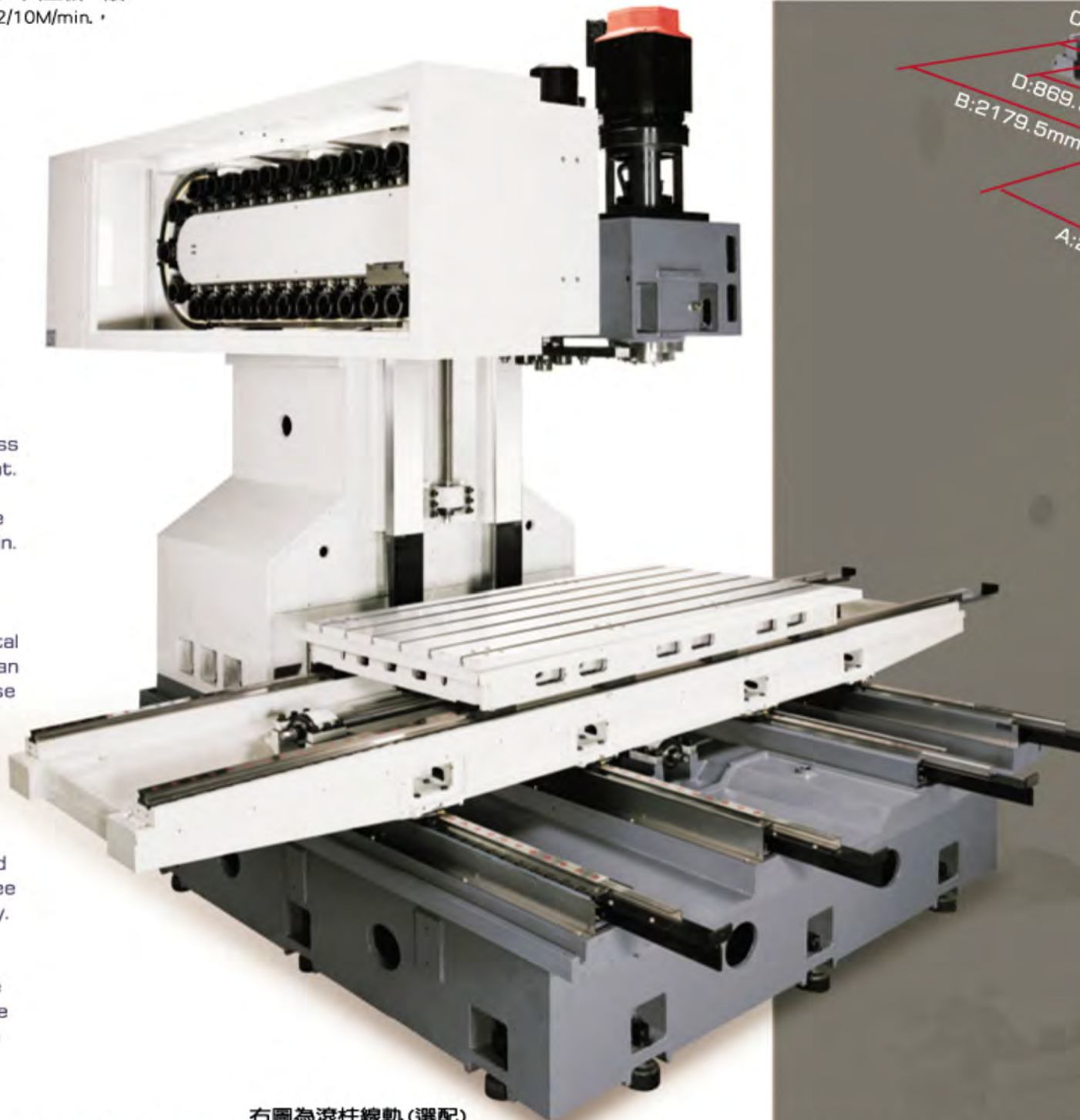


控制器系統 CONTROLLER SYSTEM

- 標準控制器搭配Fanuc Oi-MC or Oi-MD (Standard)
- 其他可選用之控制器系統 (Optional as below)
 - Fanuc 18i-MB / 31iA
 - Mitsubishi M70 / M700V
 - Fagor 8055i/PLUS
 - Selca S4040 / S4045
 - Siemens 802D / 810D / 840D

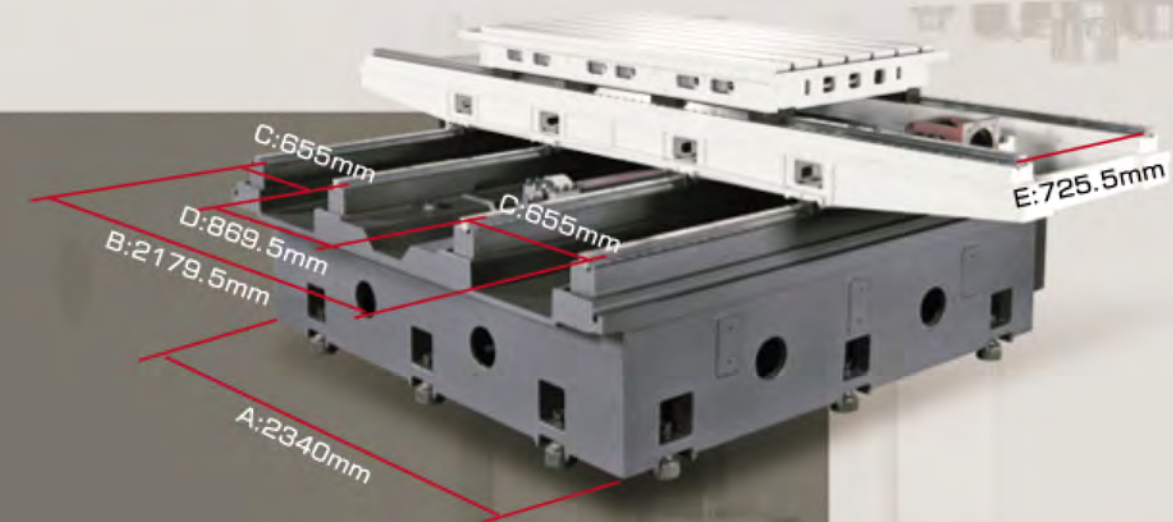
Optimal Structure Design

- X,Y軸線軌設計：摩擦係數小、移動快速，加工件在加工過程中，能快速又精準的控制移動。
Z軸立柱採硬軌設計：加強切削性能；大型機一般的X/Y/Z軸快速位移大都設計在12/12/10M/min，本機設計基礎為24/24/15M/min。
- 融入環保概念和綠色設計理念，將水性切屑液分離路徑，達到油水分離，不僅延長刀具使用壽命，且大幅降低對環境造成之傷害。可安裝粉塵吸塵器或油霧回收機，操作者清潔維護簡便，又符合綠色環保。
- 馬步型立柱設計，整體跨距加大，強化載重及加工穩定度。
- 透過精確性的分析做動態模擬與配備隨機一體化機體肋骨強化和最佳化之設計，品質領先同業。
- Linear guideways on X, Y axes, less friction, rapid traverse movement. Boxway on Z axis, strengthen cutting ability. Regular big type machine rapid are 12/12/10M/min. JHV1800 / 2000 rapid set on 24/24/15M/min.
- Pre-consideration of environmental concept, machine body design can separate oil and water, decrease the injury of nature and easily clean up. Oil Mist Collector or Dust Vacuum Cleaner is available as options
- The column bottom with U-shaped design, extended span guarantee heavy load and superior stability.
- The product is analyzed and designed by the advanced Finite Element Analysis; box-cage-type structures to ensure the high quality.



右圖為滾柱線軌(選配)
On Photo is Roller Type Linear Guideways (Opt.)

最佳結構比例 剛性表現



機械結構運用機械力學之等三角定律於設計時考量行程規劃、機械剛性結構，提升其加工精度。底座採用四線性滑軌，每軸有8個滑塊支撐，即使工作台移至最末端下方仍有6個滑塊承載，穩如泰山。(上圖X,Y軸為選購配備滾柱線軌，剛性更佳)

Machine constructions apply Triangle Mechanics to reach the best movement and positioning accuracy. Y axis with 4 linear guideways, each one have 8 sliding blocks to support. Work table still can be carried by 6 blocks even move to the end. (Above picture is Roller type Linear guideways on X, Y axes-Options)

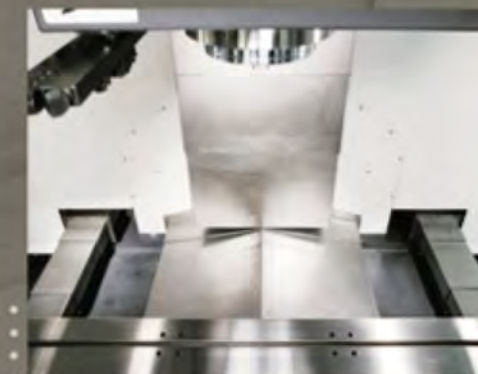


迷宮伸縮護罩

伸縮護罩製成迷宮保護，讓軌道不致於鐵屑與切削液入侵而造成精度不良與軌道損壞，更可確保機身之油水分離功能設計。

Labyrinth Telescopic Cover

Labyrinth design to protect guideway not damaged by chips and coolant oil. It also has the function to separate oil and water.



Y後三護罩設計

排屑容易與伸縮護罩面積縮小，可減少快速位移噪音，更可加裝選配後沖水裝置，保持機械內之整潔。

3-Guarding on Y Axis Back Side

The design can reduce noise when rapid traverse and easy clean up.

JHV-1800 JHV-2000



刀臂式刀庫(選購配備)

採用滾子齒輪凸輪，換刀速度快，定位精度高，刀庫容量24把刀，選刀方式為雙向任意式選刀。

Arm Type ATC (Optional)

Adopts roller gear cam for fast tool changing time. ATC tool capacity 24 tools. Bi-directional random tool selection.



凸輪式刀庫(選購配備)

可選購加大刀庫容量：32把刀或40把刀。

CAM TYPE ATC (OPTIONAL)

Tool storage capacity: 32 or 40 tools is available for optional accessories.

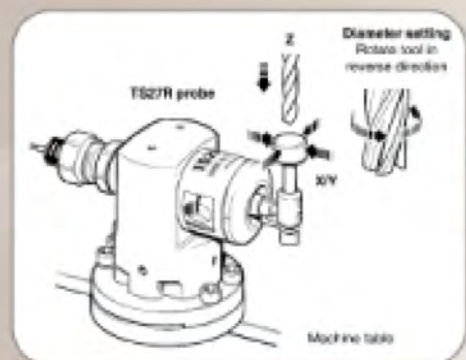


工件量測系統(選購配備)

英國Renishaw OMP60使用於工件產標設定及加工件檢驗。(選配)

RENISHAW OMP60 PROBE SYSTEM (Optional)

Advanced type of MP10. Repeatability, 1.0µm (0.00004 in) is certified at 480 mm/min (1.57 ft/min) with 50 mm stylus.



自動刀具量測系統

TS27R - 依刀具長短值、刀徑、刀具磨損偵測，經量測後自動輸入控制器做補償，操作方便。(選配)

RENISHAW TS27R (Optional)

Setting tool length in Z. Setting rotating tools in X and Y for tool radius offsets. Tool breakage detection.

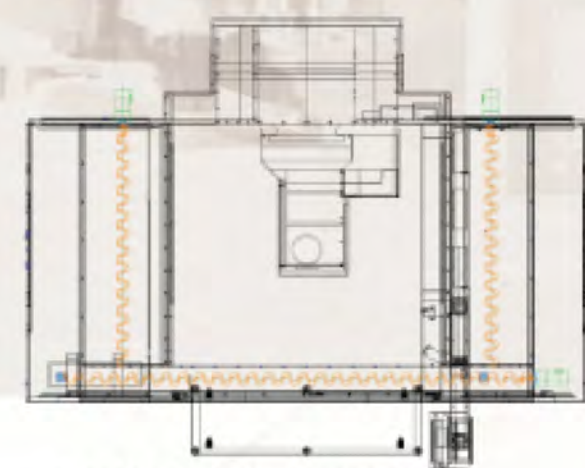


主軸中心出水(選購配備)

加裝主軸中心出水系統，切削液通過主軸中心，由刀具刀尖噴出，可直接冷卻工件與刀具切削刃上，將切削熱帶走，以確保加工品質。適合深孔加工的零件。

COOLANT THROUGH SPINDLE (Optional)

Coolant Through Spindle System spray from tool tip to cool workpiece and tools, ensure machining quality. It is suitable for processing deep holes.



三螺旋捲屑裝置(標準配備)

Triple Chip Remover - Screw Type (Standard)

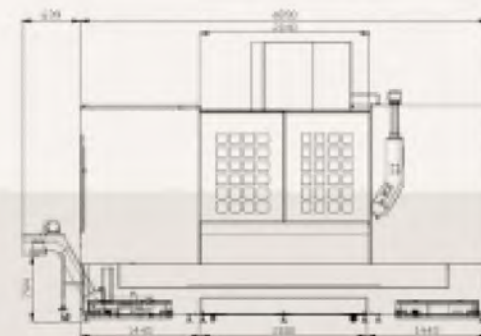
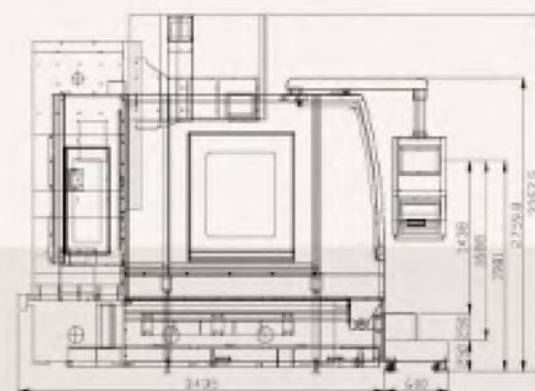
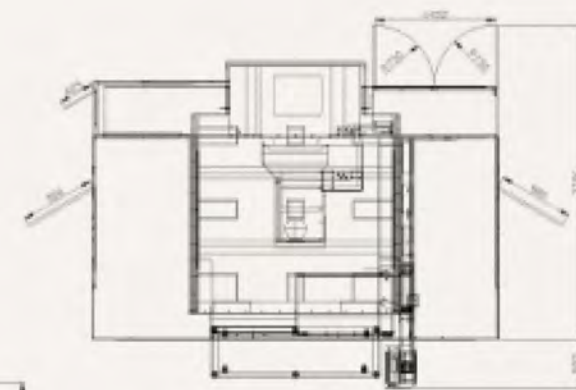


履帶式鐵屑輸送機(選購配備)

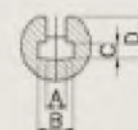
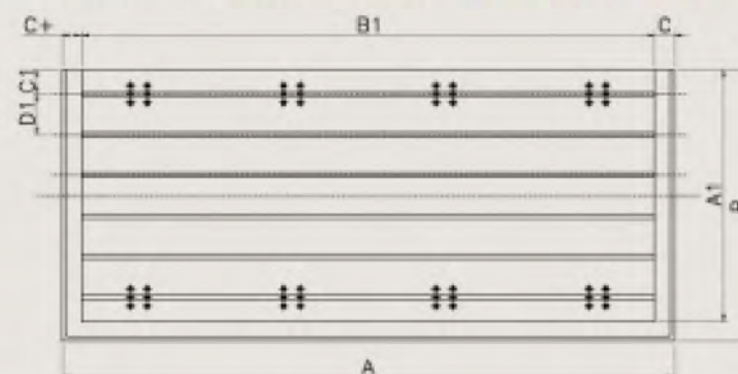
Chain Type Chip Conveyor (Optional)

機械外觀尺寸圖

Machine Dimensions



工作台及T型槽尺寸圖 / Work Table & T-Slot Dimensions

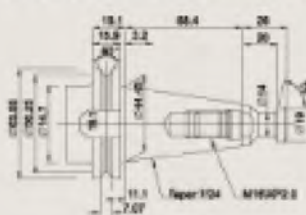


T-SLOT TYPE m/m

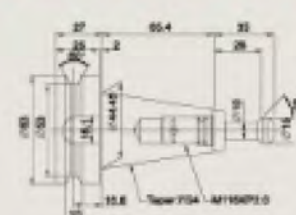
A	B	C	D
18	32	15	38

m/m	A	B	C-C+	A1	B1	C1	D1
JHV-1800	1990	970	70-70	900	1850	87.5	145
JHV-2000	2190	970	70-70	900	2050	87.5	145

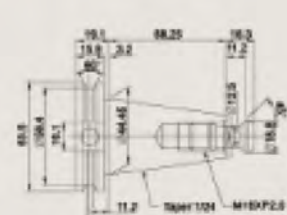
刀把及拉栓規格 / Tool Shank & Pull Stud



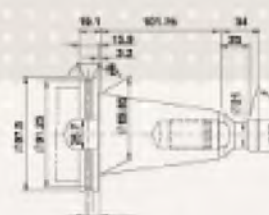
CAT40



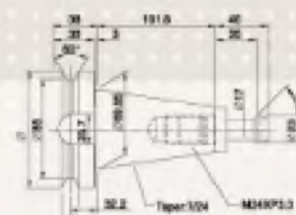
BT40 (S9871)



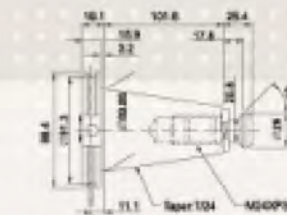
DIN40



CAT50



BT50



DIN50